



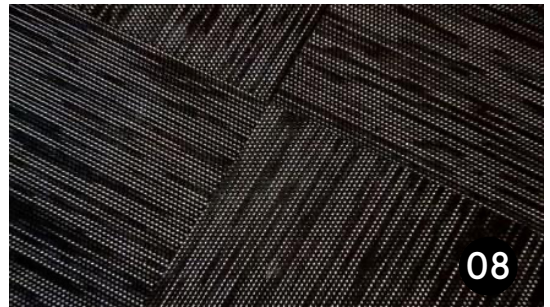
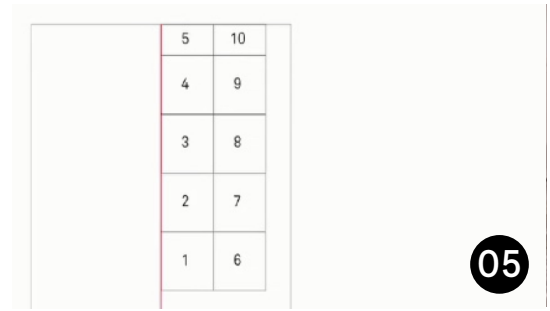
WOVEN TILES INSTALLATION & MANUAL

Tiles Your Dream



Woven Tiles

INSTALLATION INSTRUCTIONS



General

For optimal results, we recommend professional installation for woven vinyl flooring products. woven flooring materials are installed by gluing onto a clean and dry surface. Before installation, flooring material, adhesive and sub-floor must be allow to adjust to a room temperature above of 15 ° C (lies between 18° C and 23° C) and the relative air humidity must be between 35% to 60%. Ensure all flooring material is from the same production lot to avoid color variation on completed floor. Slight color variation may occur within a floor due to the specialized nature of a woven vinyl floor product and adds to the customized look of our designs. Prior to installation, draw a draft of installation plan and always follow the lengthwise direction to avoid too many joint seams. Make sure the product lies in the same direction.

Requirement of Base Condition

Make sure the surface of base is clean, completely dry, flat and free of cracks. Dirt on the surface will affect the performance of adhesive. Some floor installed with underground heat system, the temperature of surface can't be over 29 Celsius degree. Flooring installation needs to wait at least 7 days after the installation of underground heat system is completed. For different type of base, it is necessary to note the following requirements:

1. Concrete: Standard ASTM F710 Standard Practice shall be followed. Use testing method ASTM F1869 to test the grade level and ASTM F2170 to test the relative humidity. If the moisture condition of substrate is not reaching the standard, please treat the substrate with heavy duty epoxy-based moisture control system.
2. Wood: Standard ASTM F1482 must be followed. To cover with underlayer for wood base. Please do not install our flooring products directly over lauan panels, plywood with knots, treated wood or other uneven or unstable wood substrate.
3. Others: Standard ASTM F710. For ceramic tile subfloor, use underlayment compound products to level out the surface before installation is recommended.

Installation

1. Choose your flooring option from one of Waytex's many designs.
2. In order to install the flooring successfully, floor must be completely level. For ceramic or cement sub-floors, use a self-leveling cement. If the sub-floor is level but not flat, use a quick-drying cement.
3. If the sub-floor is wooden, we recommend a polyurethane (PU) glue to prevent the wooden substance from warping. Here we use PU glue from Henkel R710 and curing agent along with a trowel. Mix according to instructions on the glue. Only mix as much glue as necessary, as the glue cannot be re-used again after curing agent has been added. Choose a trowel that allows for even application of the glue.

4. Then you can create the design how to install of your new floor. Install plan normally start from the center of installation, today we are using another plan, drawing the center line (See as figure 1) Applying glue with trowel, waiting and checking the right time for installation. Installation must be completed the before floor is completely dry.

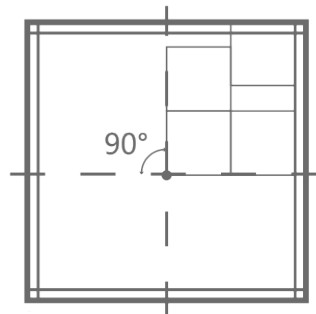


figure 1

5. We recommend the following tessellate installation way (see as figure 2) and only the products from same production lot/ tone No. can allow to install the same direction(see as figure 3,4,5) to avoid color variation.

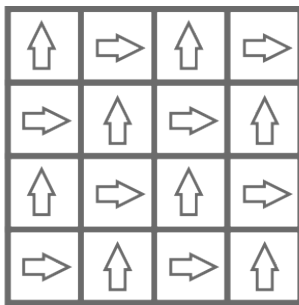


figure 2

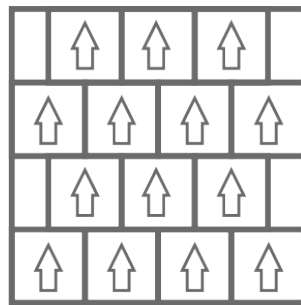


figure 3

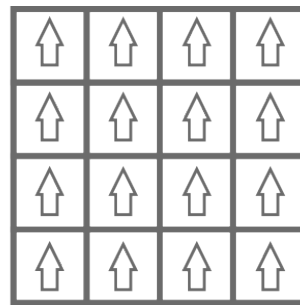


figure 4

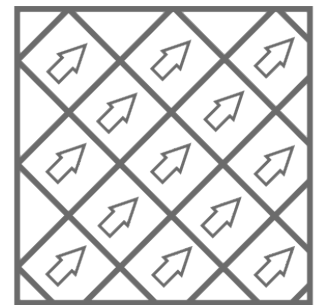


figure 5

6. Once half of the installation is complete, start the second half of the room.
7. After installation, trim the edges. Here we use an edge trimmer to cut off excess flooring.
8. To eliminate air pockets, use the heavy roller to press firmly (See as figure 6) on the entire surface.



figure 6

9. The installation is now complete. If further processes are needed, don't forget to have the proper protection of your new floor.

Clean Up and Final Finish

1. Vacuum clean the whole area to make sure the cleanliness.
2. Use a white and damp clean cloth to wipe the surface of floor. Use mild/soft detergent when needed.
3. We recommend to cover the whole area for next job operation.
4. To use commercial washing machine, We recommend Karcher scrubber BR 30/4 C (figure4) to use To find more information:www.karcher.com

Care and Maintenance

1. A proper way to take care and maintain the product will extend the life time of our flooring products.
2. To protect the surface of the floor, please do not place any sharp items on the floor.
3. As for the chair wheels, we recommend must use the soft material, such as Polyamide to prevent unnecessary tear or scratches.
4. Wet cleaning, you may use warm water or gentle detergent cleaners (PH 7-8.5). DO NOT use acetone or polish that will damage the flooring.
5. 85% of the dirt comes from outside/outdoor, so a well-function entrance system to install will be helpful to prevent most of dust and dirt.
6. Our products can be cleaned either manually or in mechanical way. Frequently cleaning will help to extend the life time of the products.
7. To remove different type of stains as following cleaning suggestions:
 1. Warm water with heavy cleaners: Coffee, juice, chocolate, cream, and so on
 2. Cold water perhaps with ammonia: Blood
 3. Light acidic cleaner (PH3-4): Rust
 4. Hot water: Glue (Water based).
 5. Chemically pure petrol: Glue (Solvent based)
 6. Dry cloth: Shoe marks
 7. Chewing gum remover or ice spray: Chewing gum



ECO BEAUTY™ China

Bamboo Industrial Zone, Huzhou, Zhejiang Province, China

China Sales Direct: +86-572-5705325

Export Sales Direct: +86-572-5705325

China Fax: +86-572-5216088

Export Fax: +86-572-5216088

Tel.: +86-198 8317 9548

Email: Sam@theflooring.pro

Website: <https://theflooring.pro>

ECO BEAUTY™
Premium Woven Vinyl Tiles