



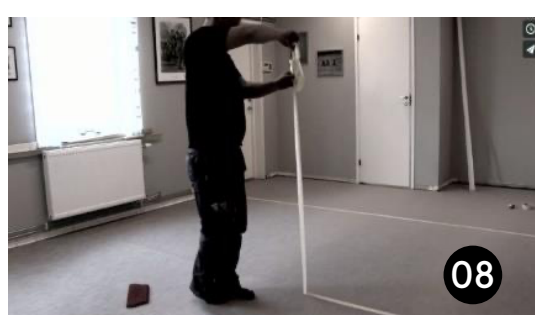
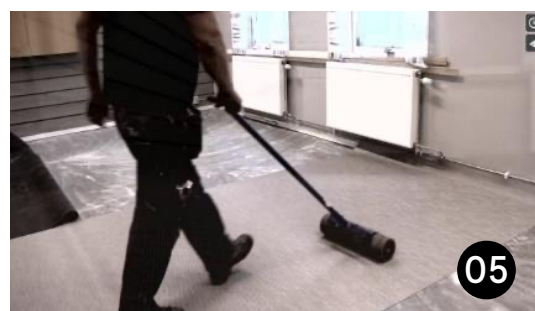
WOVEN ROLLS INSTALLATION MANUAL

Rolls Your Dream



Woven Rolls

INSTALLATION INSTRUCTIONS



General

For optimal results, we recommend professional installation for woven vinyl flooring products. woven flooring materials are installed by gluing onto a clean and dry surface. Before installation, flooring material, adhesive and sub-floor must be allow to adjust to a room temperature above of 15 ° C (lies between 18° C and 23° C) and the relative air humidity must be between 35% to 60%. Ensure all flooring material is from the same production lot to avoid color variation on completed floor. Slight color variation may occur within a floor due to the specialized nature of a woven vinyl floor product and adds to the customized look of our designs. Prior to installation, draw a draft of installation plan and always follow the lengthwise direction to avoid too many joint seams. Make sure the product lies in the same direction.

Requirement of Base Condition

Make sure the surface of base is clean, completely dry, flat and free of cracks. Dirt on the surface will affect the performance of adhesive. Some floor installed with underground heat system, the temperature of surface can't be over 29 Celsius degree. Flooring installation needs to wait at least 7 days after the installation of underground heat system is completed. For different type of base, it is necessary to note the following requirements:

1. Concrete: Standard ASTM F710 Standard Practice shall be followed. Use testing method ASTM F1869 to test the grade level and ASTM F2170 to test the relative humidity. If the moisture condition of substrate is not reaching the standard, please treat the substrate with heavy duty epoxy-based moisture control system.
2. Wood: Standard ASTM F1482 must be followed. To cover with underlayer for wood base. Please do not install our flooring products directly over lauan panels, plywood with knots, treated wood or other uneven or unstable wood substrate.
3. Others: Standard ASTM F710. For ceramic tile subfloor, use underlayment compound products to level out the surface before installation is recommended.

Installation

1. Choose your flooring option from one of ECO BEAUTY's many designs. In order to install the flooring successfully, floor must be completely level. For ceramic or cement sub-floors, use a self-leveling cement. If the sub-floor is level but not flat, use a quick-drying cement. Be sure to apply primer to the subfloor for best results.
2. Here we are going to introduce how to install our product into concrete sub-floors, applying primer all over the sub-floor with roller. Mix self-leveling cement according to manufacturer's instructions and apply to the subfloor, using the roller to erase air pockets and bubble. Allow 24 hours to dry.

3. Sand floor using a commercial sander. Floor should be level and even. Vacuum the sanding dust, drawing the installation line. Roll the product open and allow it to relax prior to installation.
4. Cutting each piece to required length of floor, making sure all arrows on the back side of the flooring face the same direction. Overlap each piece products by 3 to 4cm (See as figure 1) and cut at the seam for a smooth surface.
For designs with repeats, for instance the Herringbone design shown here, measure the right repeat (See as figure 2&3) then cut along repeat.

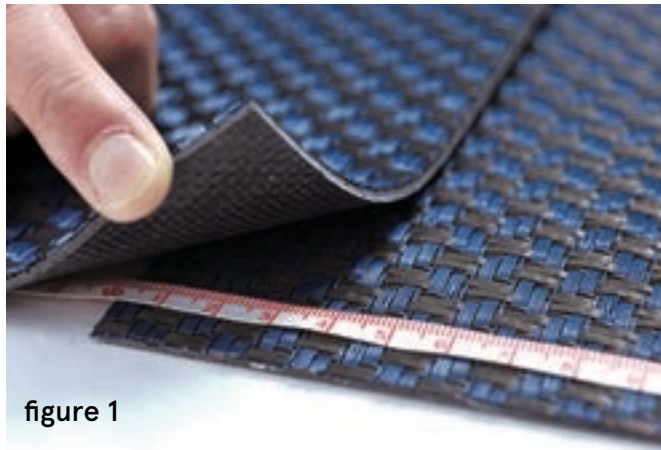


figure 1



figure 2



figure 3

5. Use the straight knife to cut through the overlapping thickness one time. Here we use a guiding cutter for best outcome. Remove the top and bottom waste.
6. After cutting, ensure sub-floor is clean. Lift the half of the flooring product and apply glue with right no. of trowel. For indoor use, an acrylic base glue can be use and if for heavy traffic, outdoor or waterproof flooring, we recommend a polyurethane (PU) glue. Today we are using Henkel acrylic glue - K188. Awaiting for right curing time, roll it back of uplift floor.
7. Trim the edge. Here we are using the edge trimmer to remove excess flooring.
8. To eliminate air pockets, use the heavy roller to press firmly on the entire surface of the floor. After installing the first repeat, use the same method to complete the balance of the floor surface.
9. Cold welded sealing: Use recommended cold weld sealing products or similar system to achieve the best condition of the joint seam.

The installation is now complete! If further processes are needed, don't forget to have the proper protection of your new floor.

Clean Up and Final Finish

1. Vacuum clean the whole area to make sure the cleanliness.
2. Use a white and damp clean cloth to wipe the surface of floor. Use mild/soft detergent when needed.
3. We recommend to cover the whole area for next job operation.
4. To use commercial washing machine, We recommend Karcher scrubber BR 30/4 C (figure4) to use To find more information: www.karcher.com



figure 4

Care and Maintenance

1. A proper way to take care and maintain the product will extend the life time of our flooring products.
2. To protect the surface of the floor, please do not place any sharp items on the floor.
3. As for the chair wheels, we recommend must use the soft material, such as Polyamide to prevent unnecessary tear or scratches.
4. Wet cleaning, you may use warm water or gentle detergent cleaners (PH 7-8.5). DO NOT use acetone or polish that will damage the flooring.
5. 85% of the dirt comes from outside/outdoor, so a well-function entrance system to install will be helpful to prevent most of dust and dirt.
6. Our products can be cleaned either manually or in mechanical way. Frequently cleaning will help to extend the life time of the products.
7. To remove different type of stains as following cleaning suggestions:
 1. Warm water with heavy cleaners: Coffee, juice, chocolate, cream, and so on
 2. Cold water perhaps with ammonia: Blood
 3. Light acidic cleaner (PH3-4): Rust
 4. Hot water: Glue (Water based).
 5. Chemically pure petrol: Glue (Solvent based)
 6. Dry cloth: Shoe marks
 7. Chewing gum remover or ice spray: Chewing gum



ECO BEAUTY™ China

Bamboo Industrial Zone, Huzhou, Zhejiang Province, China

China Sales Direct: +86-572-5705325

Export Sales Direct: +86-572-5705325

China Fax: +86-572-5216088

Export Fax: +86-572-5216088

Tel.: +86-198 8317 9548

Email: Sam@theflooring.pro

Website: <https://theflooring.pro>

ECO BEAUTY™
Premium Woven Vinyl Rolls